

## RGP Lens Types

- Corneal diameter lenses (7-12mm)
- Corneal – scleral (12.1 – 15mm)
- Mini – scleral (15.1 – 18mm)
- Scleral (>18mm)

### Corneal RGP Fitting

- Often regarded as more complex
- Fitting= straightforward
- Less margin for error if your preliminary measurements though as require precise fitting

<u>Advantages</u>	<u>Disadvantages</u>
Robust- Can be re-polished	Physical comfort – need to build up tolerance
Easy to clean – soaking solutions stronger Fewer Solution problems	Greater movement of the lens- dislodging
Last longer	FB entrapment
Easy to handle (no inside out, rigid)	
Stable vision – avoid fit of toric potential (tear lens)	
Good O2 supply	
Less dehydration	
Customisation (high rx, tints etc etc)	
Good tear Exchange	

### When to choose RGP

- Moderate Corneal Astigmatism- avoid the wear of toric lens
- High complex rx
- History of allergies
- Problems with soft contact lens (damage, deposits, solutions, SCL induced papillary conjunctivitis)

## Fitting of an RGP Lens

- Describe the **sensation**
- Manage patient **expectations**
- Demonstrate practitioner confidence

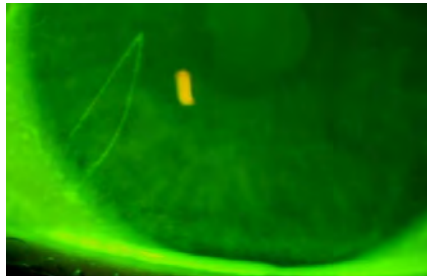
(Will not feel 100% comfortable at the start)

- Avoid local **anaesthetics** – (up for debate) this can also reduce blink reflex
- Have px close eyes and look down during adaption

## Preparing for RGP lens

1. Lens will arrive dry
  2. Inspect the lens before insertion and look for any damage
  3. Can focimeter if needed
- Lens then must be cleaned
    1. Cleaner – 20 sec on palm
    2. Rinse
    3. Conditioner

## Foreign Body Track



- **In RGP this is likely to happen when FB get trapped under the CL**
  - Eyelashes
  - Grit/sand
  - Make up
  - Back surface lens deposits
  - Lid margin debris/flakes of skin
  - Damaged lens
- **Symptoms**
  - Symptoms include asymptomatic to sharp pain
  - Irrigation when lens there is discomfort even after removal of CL
  - Need to THOROUGHLY EXAMINE THE EYE ESP PALP CONJ
- **Management**
  - Remove lens for 24/48 hours
  - Prophylactic antibiotic
  - Sunglasses/eye wear
  - Replace damaged CL
  - Conversation around I&R