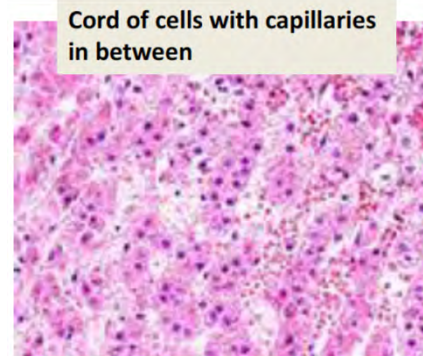
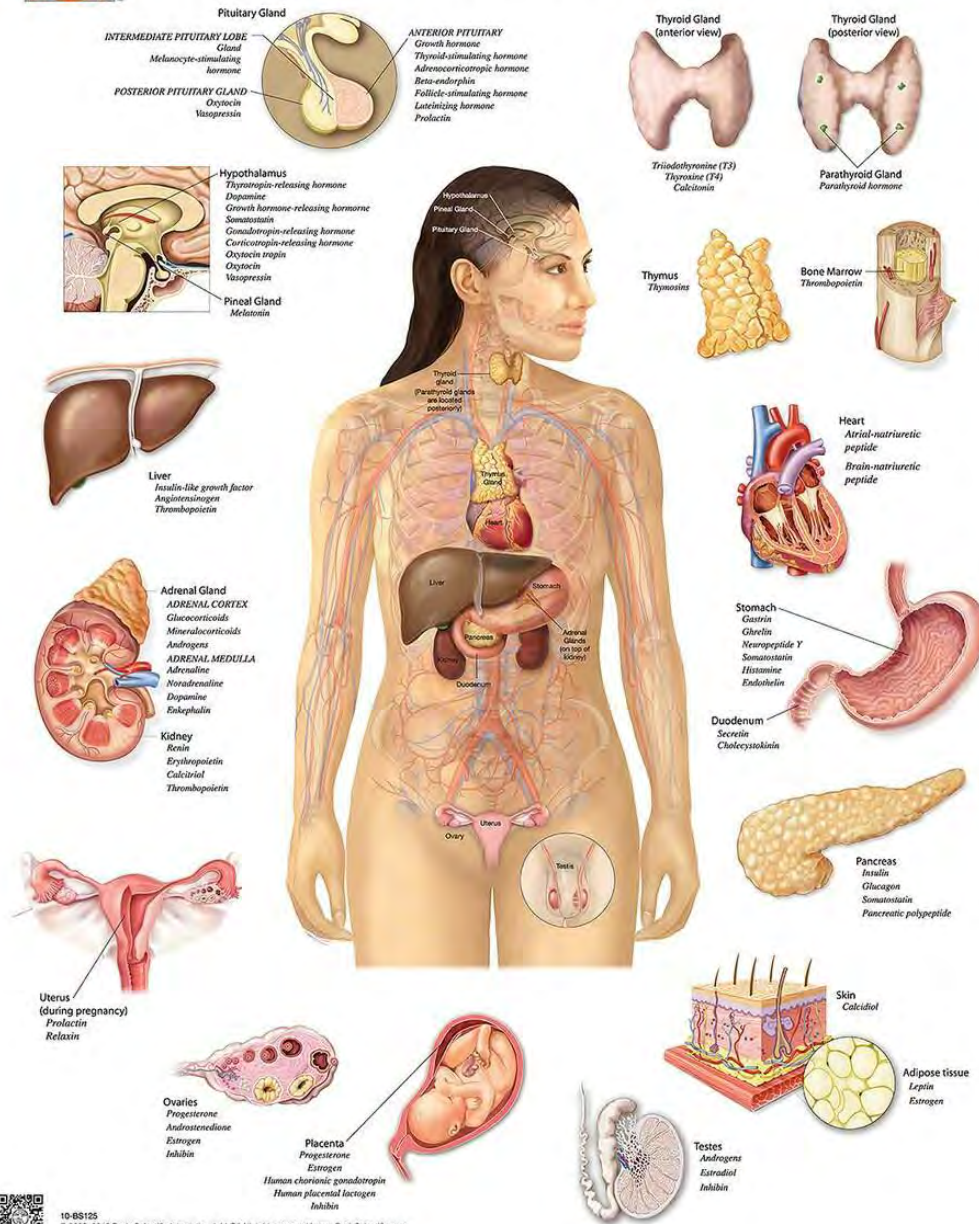
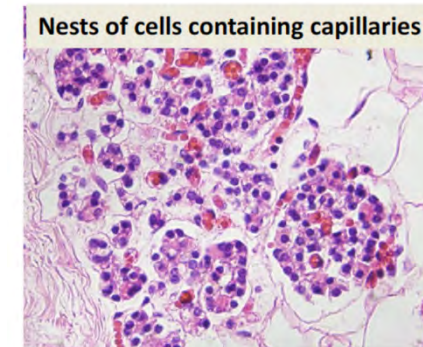




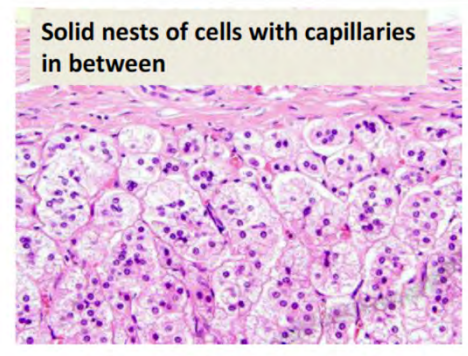
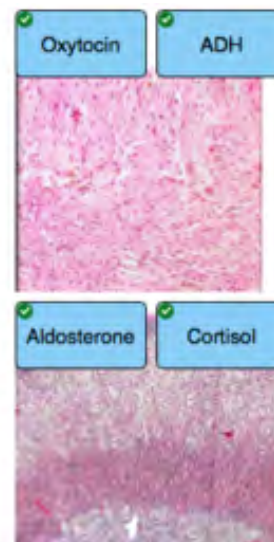
# ENDOCRINE SYSTEM



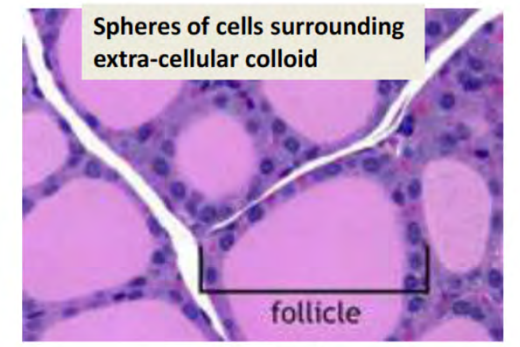
Adrenal cortex (reticularis)



Parathyroid gland



Adrenal cortex (glomerulosa)



Thyroid Gland

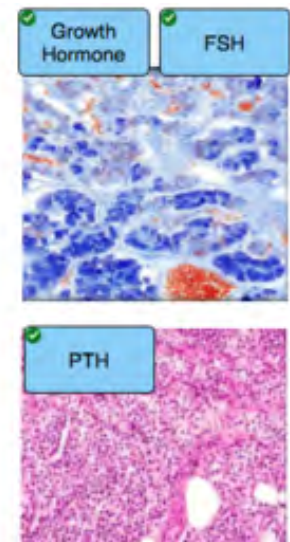
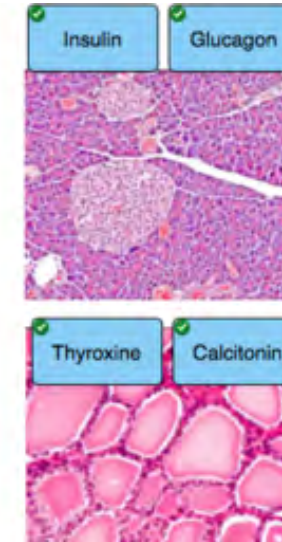
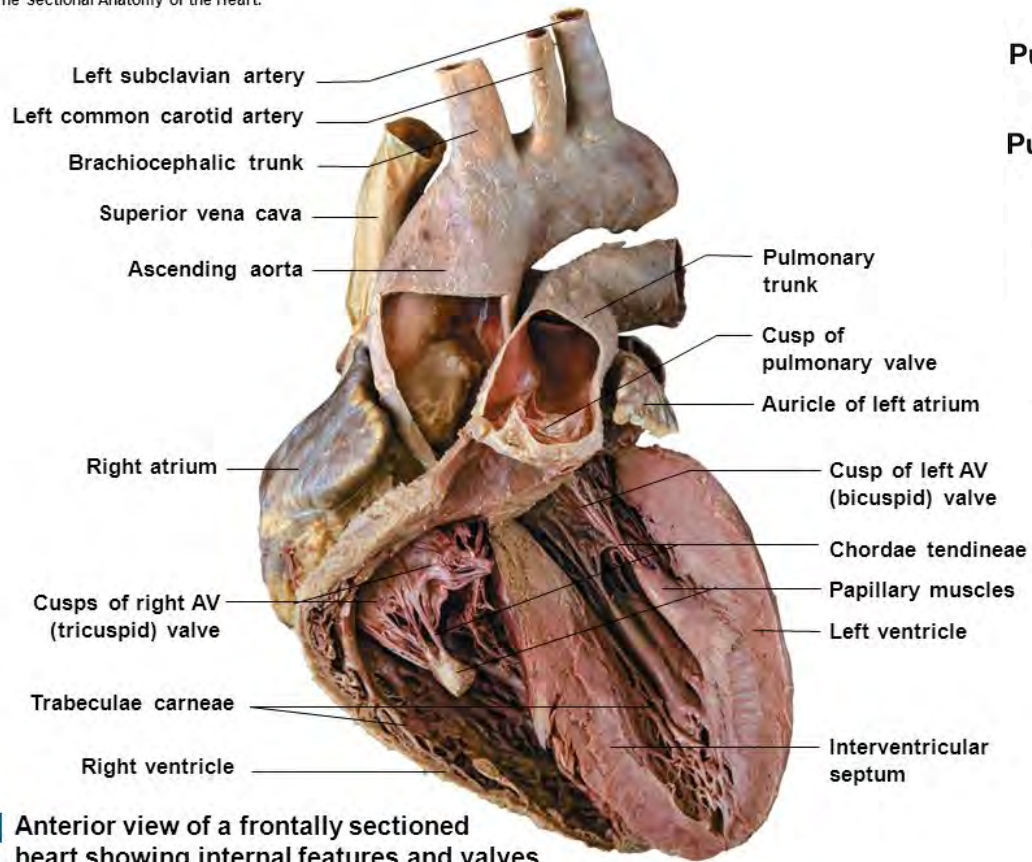




Figure 20-6c The Sectional Anatomy of the Heart.



**C** Anterior view of a frontally sectioned heart showing internal features and valves.

© 2015 Pearson Education, Inc.

